



High Performance Synthetic Felt Underlay

LAYSAFE - FT 26

Technical Specification

Product Code	FT 26
Application	Acoustic and high performance underlay
Material	100% Polyester Fiber with 85% Recycled Material
Traffic	Heavy Residential
Thickness	8 mm +/- 10%
Weight	850 g/m ² +/- 10%
Density	106 kgs / Cubic.m +/-
Width	200 cm +/- 1%
Roll Length	20 meters +/- 1%
Installation	Stretch Fit



Extremely durable

LaySafe is clean, odorless and extremely durable. Unlike foam rubber, it does not deteriorate or crumble over time. It can be reused when carpet is replaced.

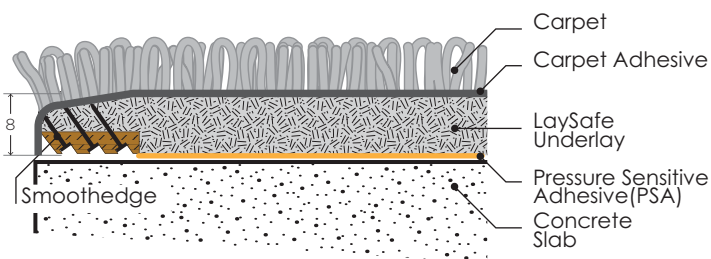
Better support for the carpet

LaySafe is made from millions of recycled synthetic fibers reclaimed from creel-end waste carpet yarn, needled and compressed to an optimum density that would give best support to the carpet, enabling the carpet to retain its new look longer.

Superior flammability ratings

LaySafe has excellent flame retardant properties compared with foam rubber. If burnt, flames do not spread and gives off white smoke as opposed to toxic black smoke emitted when rubber burns while flames spread rapidly. LaySafe meets ASTM E648 Class 1 rating of Critical Radiant Flux for use in corridor and exit ways and as specified by the Nation Fire Protection Association (NFPA) of the United States of America.

LaySafe underlay is ideal for offices where castor chairs are used. Chairs move more freely compared with carpet installed on soft foam rubber underlay.



Stretch Fit Installation
Section



High Performance Synthetic Felt Underlay

Laysafe is designed to withstand heavy traffic in areas such as office, convention hall, casino, exhibition hall, hotel corridor or bedroom, Suitable for use with gripper or double-glue installation. It gives better protection to the carpet that would stay wrinkle-free and retains its new look longer and still can be re-used at the end of the carpet's life.

Made form 100 % recycled and recyclable fibers compressed to a high density designed to give better protection to the carpet under heavy use without sacrificing softness the gives comfort to the foot.

Laysafe has been developed under 3 principles :

1



Fire Safety

ASTM E648
Class 1 rating by the National Fire Protection Association of the United States of America

2

Performance



Luxurious Underfoot Comfort



Better Support



Superior Sound Absorbency and footstep noise



Air Permeable

3



ECO Friendly

Made of Recycled Material > 80% Post Consumer Recycled Material

Special Features:

- 100% synthetic fibers
- Use environmentally friendly recycled and recyclable materials
- Odorless
- Clean and smooth surfaces
- Dust-free
- High density for exceptional carpet support
- Does not develop bacteria or mildew
- Easy installation
- Designed for double glue installation system
- Excellent flammability ratings

Note : Due to natural of recycled fibers, the color variation & shade is uncontrollable & subject to changes without prior notice

Standard

BS 5808 : 1991 Test results
British Standard for Carpet Underlay

Tensile strenght	BS 2567, > 400N
Loss in thickness after static loadind	BS 4939, < 20%
Loss in thickness after dynamic loadind	BS 4052, < 15%
Retention of work of Compression	BS 4098, > 80%
Resistance to cracking	BS 5808, Pass

Flammability

Methenamine Pill Test	ASTM-D 2859, Pass
Ceitical Radiant Flux	ASTM E 648, Class 1 (as specified in NFPA Life Safety Code)
Hot Metal Nut	BS 47902, Low radius of ignition
- Volatile Organic Compound	ASTM D 5116-06, PASS
- Recycled Content (100% Synthetic Fiber)	> 85 %



High Performance Synthetic Felt Underlay

RELEASABLE DOUBLE GLUE INSTALLATION SYSTEM FOR COMMERCIAL CARPET

Install LaySafe FDX Synthetic Felt Underlay



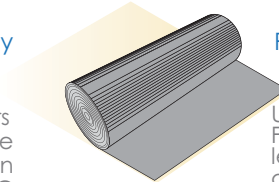
Floor Preparation

Ensure that the floor be free of holes and loose tiles. Repairs should be made as necessary to provide a smooth surface for carpet and underlay installation. The floor should be dry and dust free. If it needs to be mopped, it should be allowed to completely dry before installation. The presence of excessive moisture may cause degradation of the adhesive.



Cutting Underlay

Beginning 24 hours prior to installation, the temperature needs to be maintained between 18 degree C and 35 degree C (65 F - 95 F).



Room Condition

Unroll and cut the FDX in the longest length possible and ensure that the underlay seams be kept at least 6" from the carpet seams.



Applying Adhesive

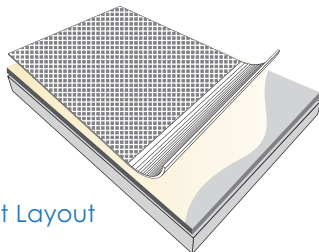
Once the underlay has been laid out, fold it back and apply Flortac FDX to the floor. Pay special attention to spreading adhesive adjacent to the walls to prevent edge curling. Apply Flortac FDX with a U-notched trowel. Apply the adhesive with a paint roller can result in an inconsistent application.



Laying Underlay

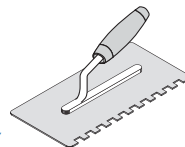
For best result, allow the adhesive to dry and become "tacky wet" for about 30 minutes before laying the FDX to the adhesive. Use carpet core to roll in. Work toward the seams and eliminating bubbles and wrinkles.

Install the carpet with LaySafe FDX



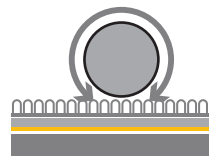
Carpet Layout

Cut the carpet to the proper length and spread it out in the area to be carpeted. The carpet should be longer than the area measurement to allow for pattern repeat. Carpet seams should be right angle to the underlay. Align all carpet to their proper position and trim seams.



Applying Adhesive on FDX

Spread the Flortac FDX uniformly with a U-notched trowel, leaving the adhesive ridges high enough to achieve a full and complete coverage of the underlay and the carpet backing.



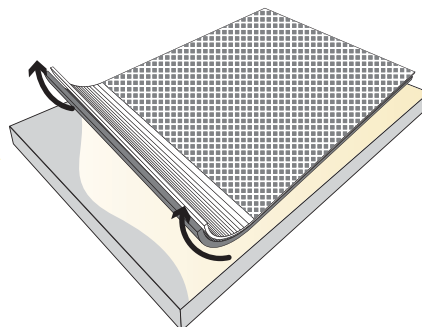
Pressing carpet

Press carpet firmly into adhesive. Roll in with a carpet roller. Use an appropriate carpet roller, roll in both directions to promote complete adhesion of carpet to underlay. Woven carpet should be rolled a second time about 3 to 12 hours after initial rolling to ensure a strong bond is established.



Laying Carpet on FDX

Once the adhesive has been spread for a given section, lay carpet according to the open time required to promote tackiness and allow even distribution and penetration of adhesive on all areas of backing.



Removal LaySafe FDX from Subfloor

To remove flooring cut through the carpet and pad at 3-4 inch intervals and by lifting at the a corner, release the FDX pad from the subfloor.